



Corp. & Regd. Office:

DECO-MICA Ltd. 306, Iscon Mall, Above Star-India Bazaar, Satellite Road, Ahmedabad - 380 015. Gujarat (INDIA)

+91-79-26730412 | +91-79-40028458 | info@heritagesurfaces.com | www.heritagesurfaces.com



Heritage
LAMINATES



VOL.01

www.heritagesurfaces.com



Xterio[™]
EXTERIOR LAMINATES

Heritage
LAMINATES



Experience
the **Beauty**

WHY XTERIO?











The incongruous scenes of cement jungle worries but those that seek harmonious, natural designs. Which is why Heritage Laminates introduces external cladding for the discerning customers. Transforming natural textured, high quality wood into fashionable exteriors, Heritage laminates has made its presence felt in exterior timber cladding markets. Along with imparting external aesthetics, comes durability that lasts for a long time.

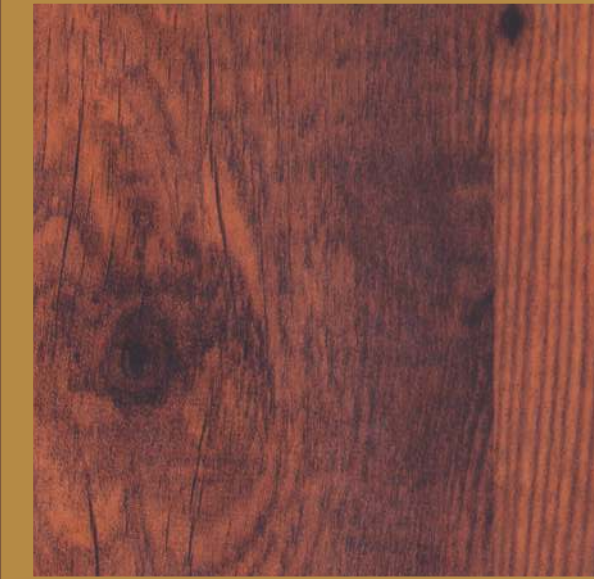


Xterio[™]
EXTERIOR LAMINATES



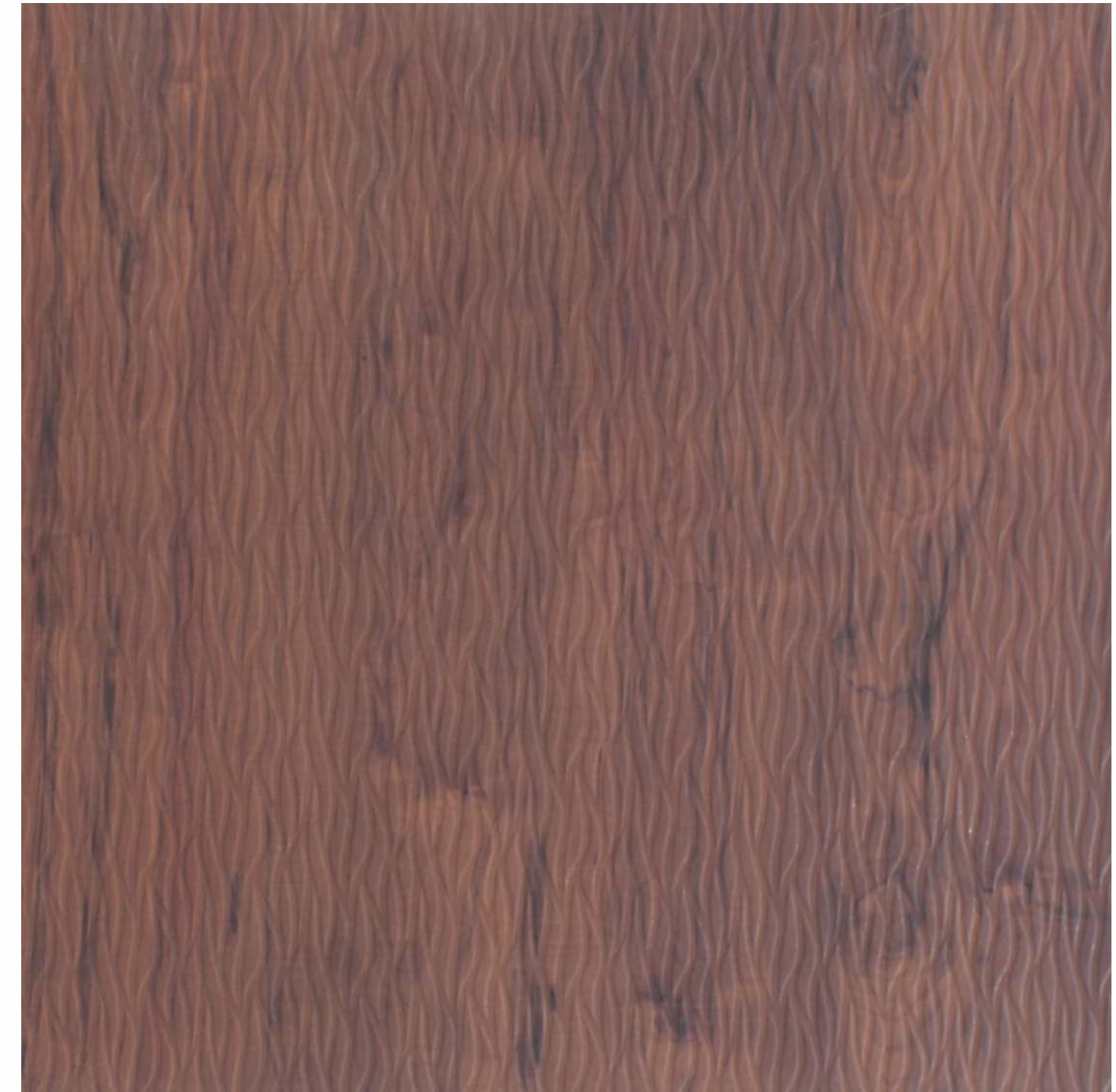
TOP 10 FEATURES:

-  Ultra Violet Radiation Resistance
-  Resistance to weathering atmospheric conditions
-  Non-combustible
-  Surface Scratch & Abrasion Resistance
-  Surface Reaction Resistance against Acid Rains, Air Pollution etc.
-  Vast Range of Colors & Designs
-  Easy Maintenance
-  No Harmful Substances
-  Aesthetic Designs
-  Advanced Technologies



Artistic exterior cladding with a 6mm thickness. Not only does it provide a visible sense of elegant exteriors, but also innate protection from elements of nature.





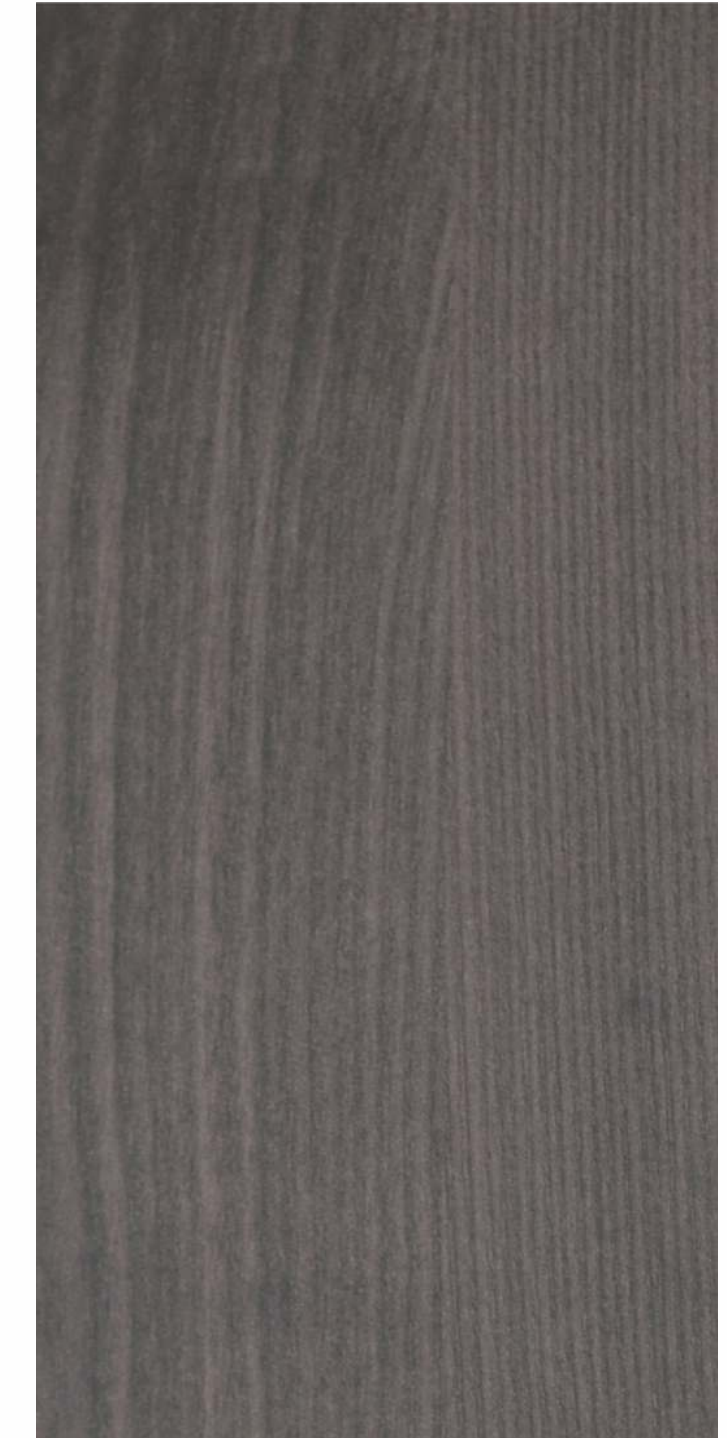
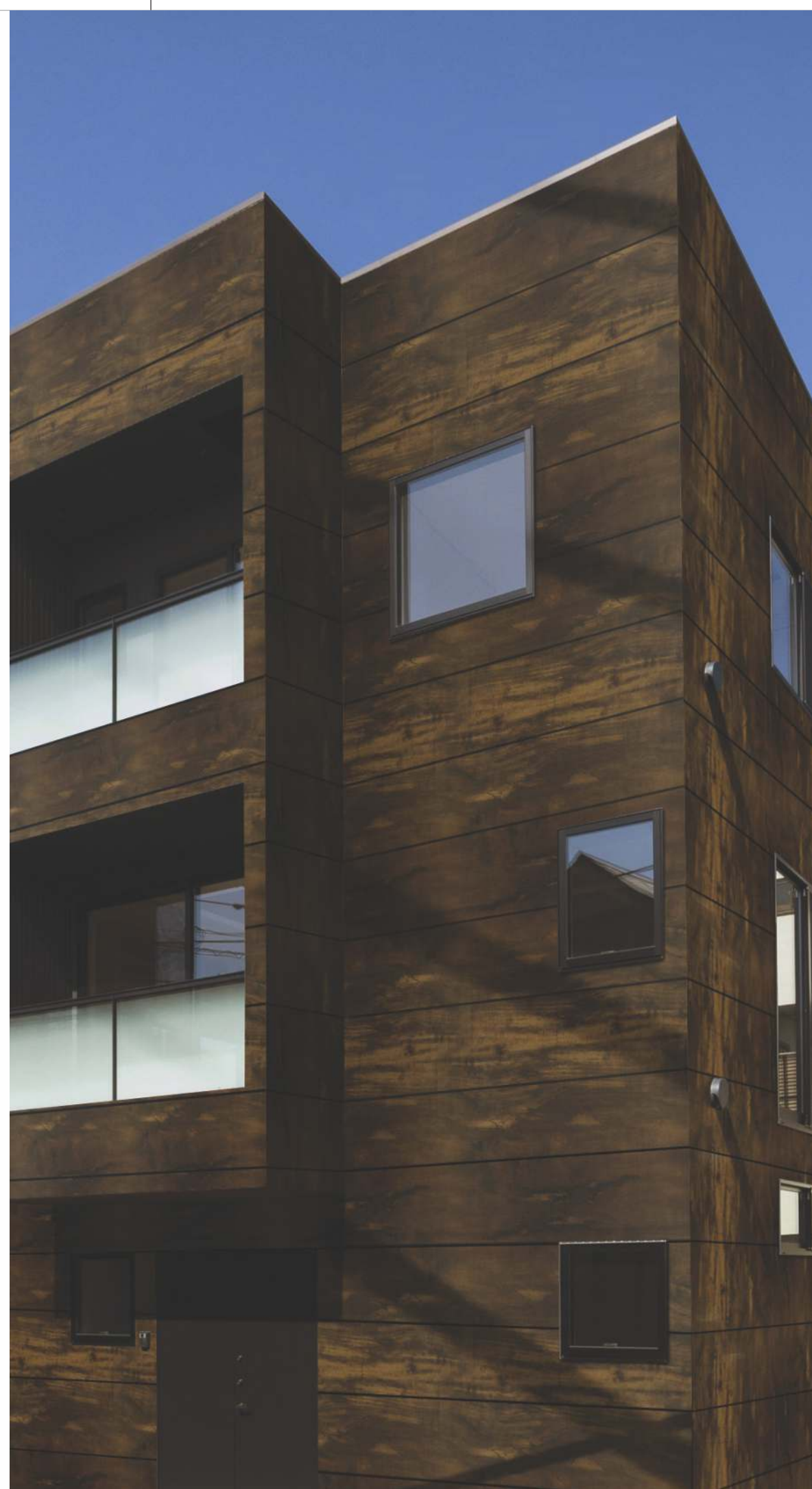
7926 XTE



7959 XTE



7958 XTE



7645 XTE



7924 XTE



7978 XTE



7914 XTE



7913 XTE



7642 XTE





7965 XTE



7998 XTE



9907 XTE



9909 XTE



7999 XTE



7997 XTE



9621 XTE



9622 XTE





7977 XTE



7542 XTE



7516 XTE



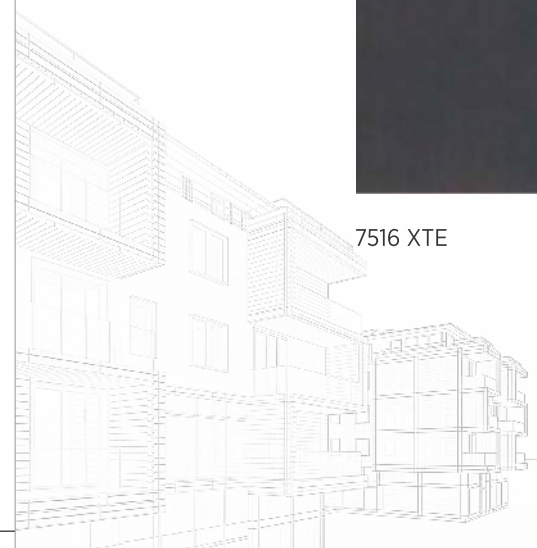
7596 XTE



9810 XTE



7561 XTE

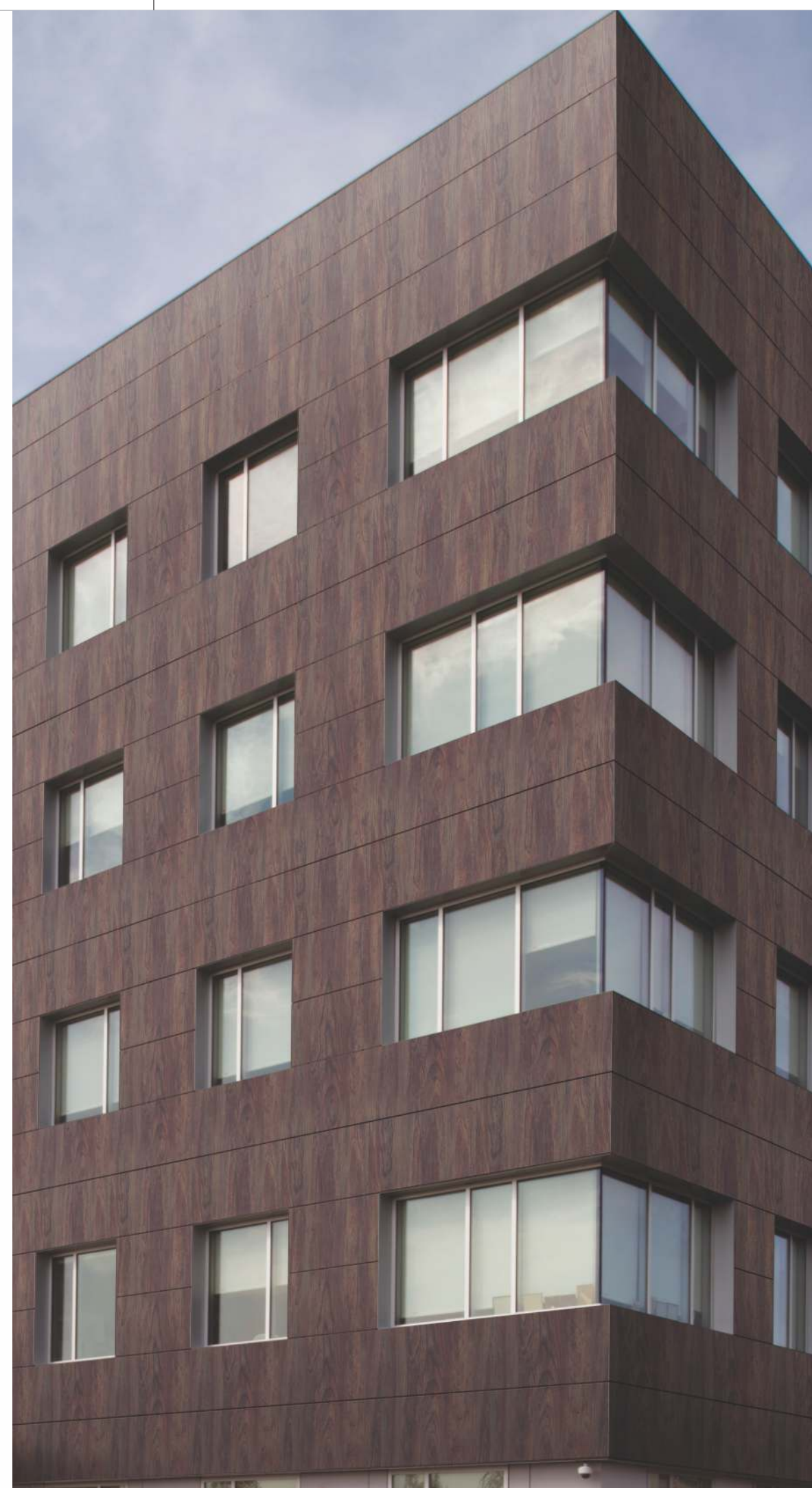




9923 XTE



9933 XTE



9930 XTE





9603 XTE

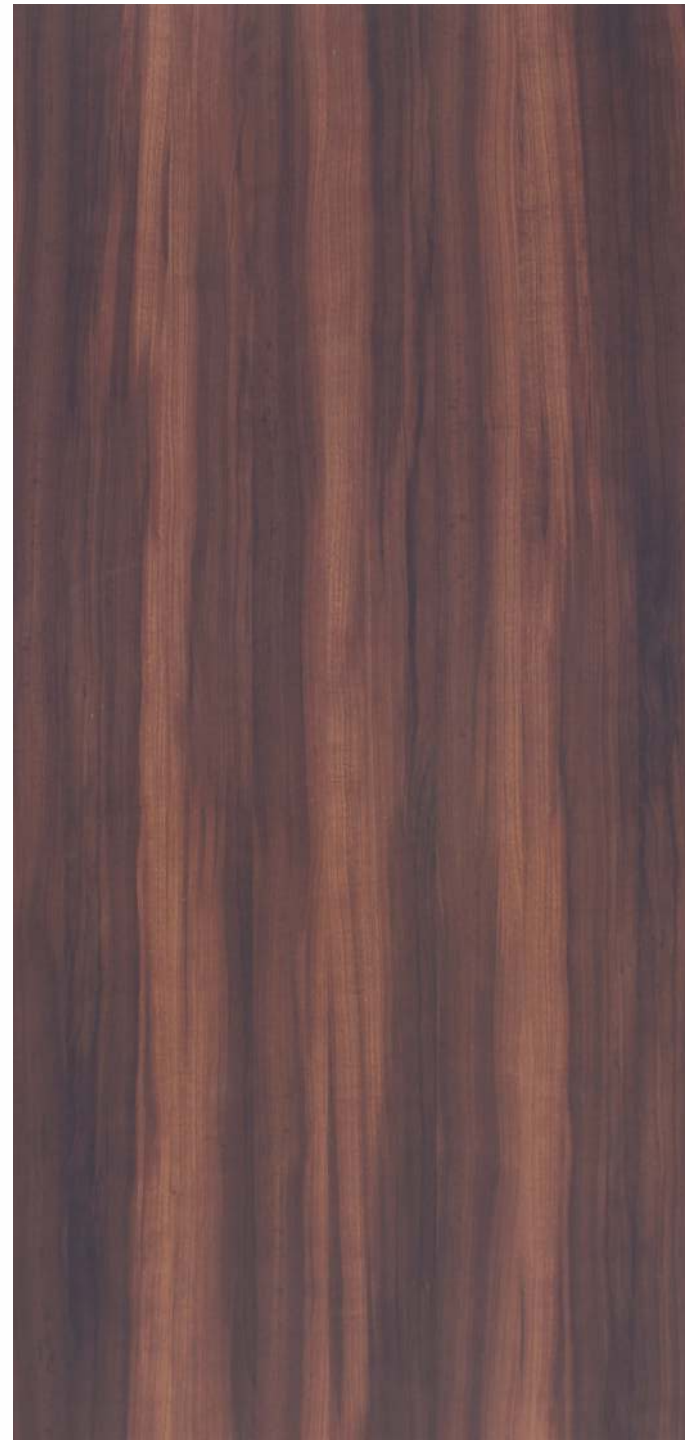


9604 XTE



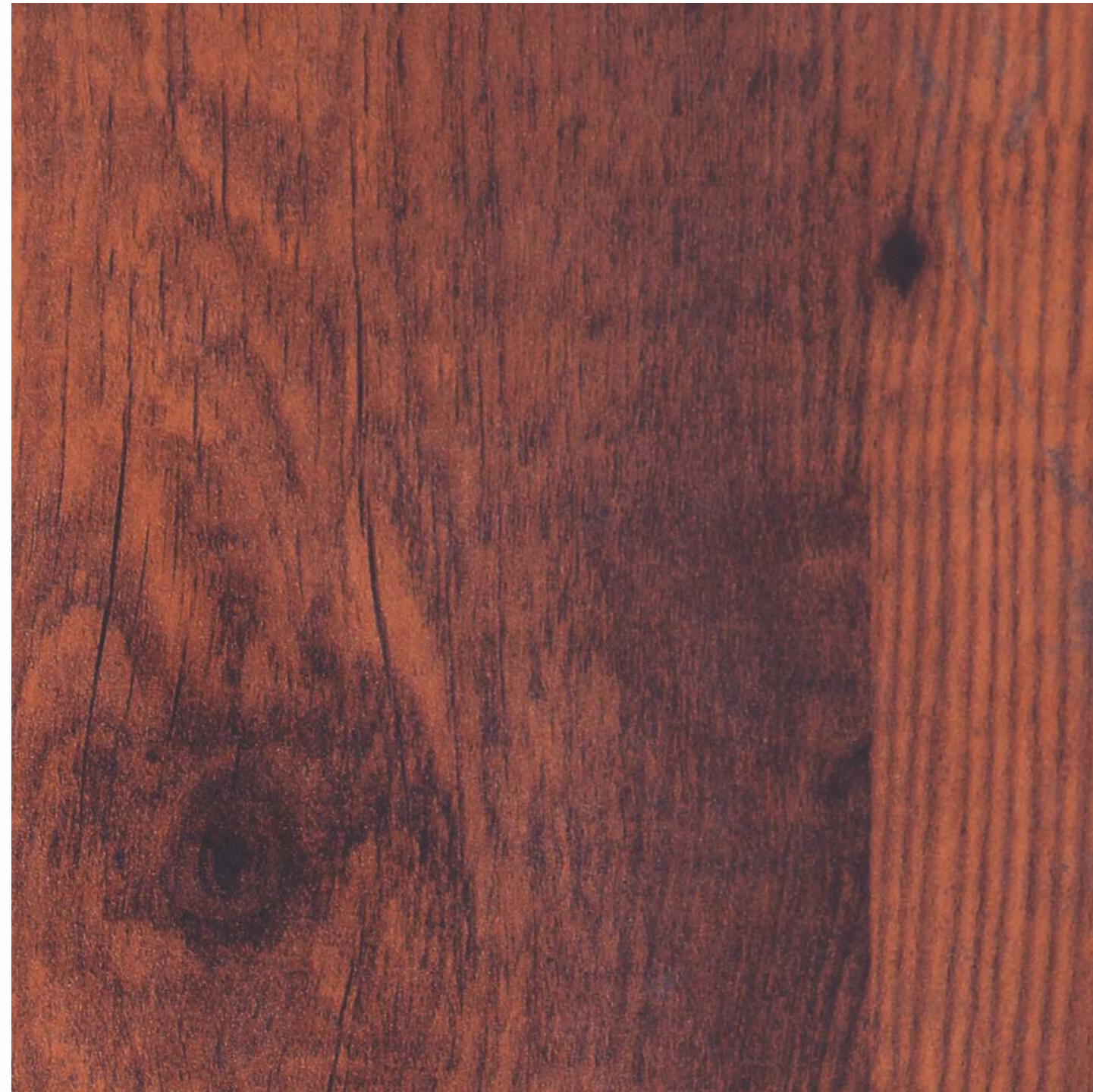


9916 XTE



7598 XTE





7927 XTE

SL NO.	PROPERTIES	TEST METHOD	ATTRIBUTES OF PERFORMANCE	UNIT OF MEASUREMENT	RESULTS (AS PER EN 438-6)
1	DIMENSIONAL PROPERTIES				
1.1	Thickness	EN 438-2.5	Thickness tolerance	6 mm	5<T<8: ± 0, 4
1.2	Size	EN 438-2.6	Length and width	8	+10/-0
1.3	Straightness of edges	EN 438-2.7	Straightness of edges	mm/m	≤1, 5
1.4	Squareness	EN 438-2.8	Squareness	mm/m	≤1, 5
1.5	Flatness	EN 438-2.9	Flatness (measured on full size sheet).	mm/m	2,0<T<6, 0 : 8
2	PHYSICAL PROPERTIES				
2.1	Flexural Modulus	EN ISO 1 78	Stress	Mpa	> 9000
2.2	Flexural Strength	EN ISO 1 78	Stress	Mpa	> 80
2.3	Tensile Strength	EN ISO 527-2	Stress	Mpa	> 60
2.4	Density	EN ISO 1183	Density	gm/cm ³	> 1,35
2.5	Resistance to impact with large diameter ball	EN 438-2.21	Indent. dia 10mm 2 ≤ T< 6mm Drop Height	min.	> 1400
			Indent. dia 10mm T ≥ 6mm - Drop Height	min.	> 1800
2.6	Resistance to wet Conditions	EN 438-2.15	Mass increase - 2 ≤ T< 5mm	max. %	EGS/EDS- <5, EGS/EDS- <8
			Mass increase - 2 ≥ T< 5mm	max. %	EGS/EDS- <7, EGS/EDS- <10
			Appearance	Rating	> 4
2.7	Dimensional stability at elevated temperatures	EN 438-2.17	Cumulative dimensional change-2 ≤ T< 5mm	Longitudinal %	≤0,40
				Transversal %	≤0,80
			Cumulative dimensional change-2 > T< 5mm	Longitudinal %	≤0,30
				Transversal %	≤0,60
3					
3.1	Resistance to Climatic Shock	EN 438-2.19	Thermal Shock Resistance - Appearance	Rating	> 4
3.2	Resistance to Artificial Weathering	EN 438-2.19	Contrast	Grey scale rating	> 3

Note: Please note that the catalog is provided here forthwith, for representational purposes only. It is neither a technical manual nor a legally binding document. Pictorial images of products are not in exact manner as depicted. We are not liable for any misrepresentation due to the aforementioned disclosure.



Pest Free



Waterproof



Eco Friendly



Fire Proof



Resistance
To Natural
Elements



No Special
Tools



Cost Effective



Satisfaction
Guaranteed